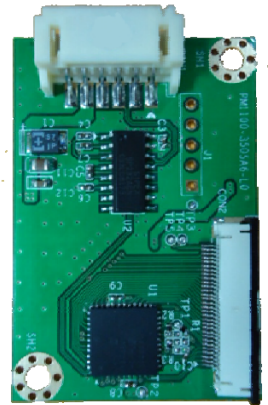


PenMount 1100 RS232 / I²C Interface Control Board

PenMount 1100 control board is one of the cutting-edge innovations from PenMount. A collectively integrated feature with RS232 / I²C interface supporting 3" to 4.9" projected capacitive touch screens; complemented by the superbly developed PenMount drivers which can be used directly in Windows 7.

PenMount 1100 Control Board uses P2-02 Series controller, which is a capacitive sensing IC designed for AMT Projected Capacitive Input (PCI) touch panel and other projected capacitive touch panel. It is designed for PCI touch screen size up to 4.9". PenMount 1100 Control Board has the programmable filter, gain amplifier; with the functions of single, dual touch; and the gestures of one and two fingers. There are two connectors on this board: one 40 Pins ZIF connector for PCI touch screen FPC tail, one RS232 connector for 6-pin RS232 cable (optional). Also I²C interface designed on board



Specifications

Touch Screen:	Projected capacitive type, size is 3" to 4.9"
Host interface:	RS232 : 19200- 38400 baud rate / non-PnP mode
Touch Screen Controller:	PenMount P2-02 series
Size:	30X45 mm , two 3φscrew holes
ADC resolution:	10 bits
Operating Voltage:	+5V DC for RS232& I2C
Storage Temperature Range:	-40°C ~ +85°C
Operating Temperature:	-10°C ~ +70°C
Power Consumption:	Typical 20mA
Max. touch line:	13 sensing lines 15 driving lines
Sample rate:	> 100 sps (sample per second)

