

MICON 5 SL, SMT standard, 2.9 ± 0.6 N, 1 NO

COMING SOON


fields of application

- Measurement-control-regulation
- Mechanical and system engineering
- Automotive
- Electro-medical

special features

- Gold contacts, reliable switching with low currents
- Special tactile feedback
- High packing density due to small form factor (5.1 x 6.4 mm)
- Different operating forces
- Ring and full illumination of the button surface due to plunger
- Variable overall heights due to plunger
- Terminal technology: SMT
- Traceability through product identification in accordance with DIN EN ISO 9001



description

MICON 5 tactile switches offer extreme switching reliability, with a very small space requirement. They can be arranged individually, in rows or as key blocks. For use beneath overlays, we recommend combining the MICON 5 tactile switches with plungers. Here are the properties at a glance:

- Suitable for the most important soldering techniques
- Soldering bath for THT versions
- Reflow soldering for SMT versions
- Vapor phase soldering for SMT versions
- Manual soldering
- Processing of the SMT design with SMT automatic assembly machines
- IMDS entry
- Packaging in blister tape, spool with 2,100 pieces
- Proposal for stencil printing: 150 µm stencil with 10% pad reduction on area

Distributed by:



technical data

➤ general

Operating temperature, min.	-40 °C
Storage temperature, min.	-40 °C
Operating temperature, max.	125 °C
Storage temperature, max.	90 °C
illuminated	No
Soldering	Reflow

direct links

- RAFI eCatalog

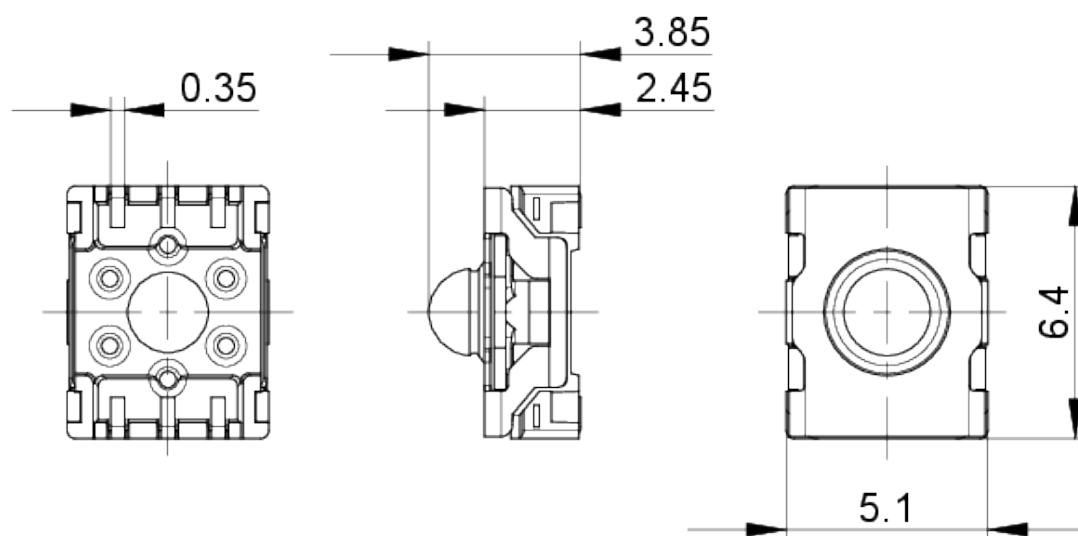
Distributed by:



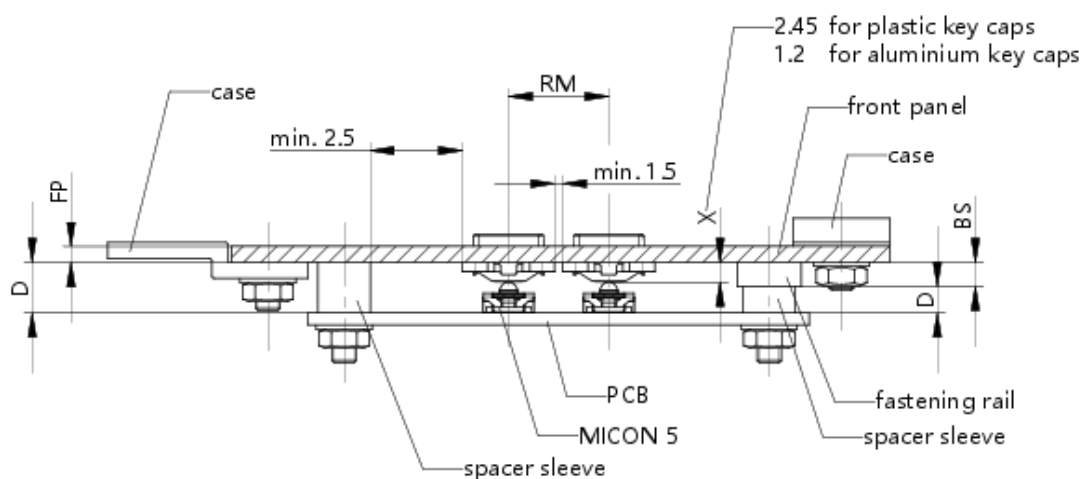
Solder heat resistance according to standard	DIN EN 60068-2-58
Packaging	DIN EN 61760-1
Operating life	Blister
Degree of protection, front side, according to DIN EN 60529	10,000,000 cycles
Degree of protection, rear side, according to DIN EN 60529	IP54
MSL Moisture Sensitivity Level	IPx7
Shock resistance according to standard IEC 60068-2-27	IP54
oscillation resistance according to standard IEC 60068-2-6	IPx7
RoHS compliant	1
REACH compliant	100 g at 6 ms amplitude semi-sinusoidal
> mounting diameters	
Installation height	5 g at 10...500 Hz
Grid, min.	Yes
Outside dimension, length	Yes
Outside dimension, width	
Outside dimension, height	
> mechanical data	
Actuation function	3.85 ± 0.1 mm
Operating force, max.	6 x 7,8 mm
Operating force, min.	6.4 ± 0.1 mm
Switching travel	5.1 ± 0.1 mm
Contact function	3.85 ± 0.1 mm
Contact system	
Contact material	
Terminal on the rear	
Solderability	
> electrical data	
Rated voltage, min.	momentary contact function
Rated voltage, max.	4 N
Dielectric strength	2.9 ± 0.6 N
Rated current, min.	0.7 ± 0.15 mm
Rated current, max.	1 NO
Rated power, max.	Snap-action contact

drawings

Dimensioned drawing



System drawing

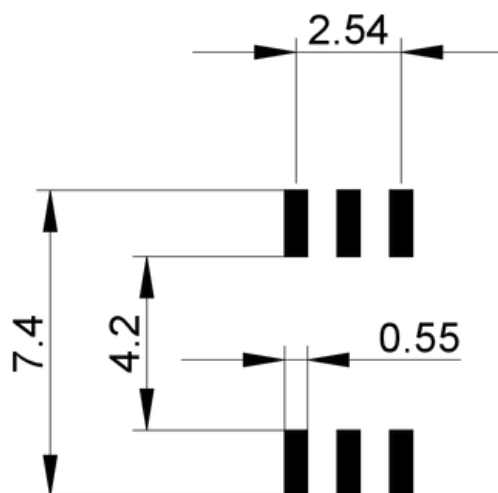


Distributed by:

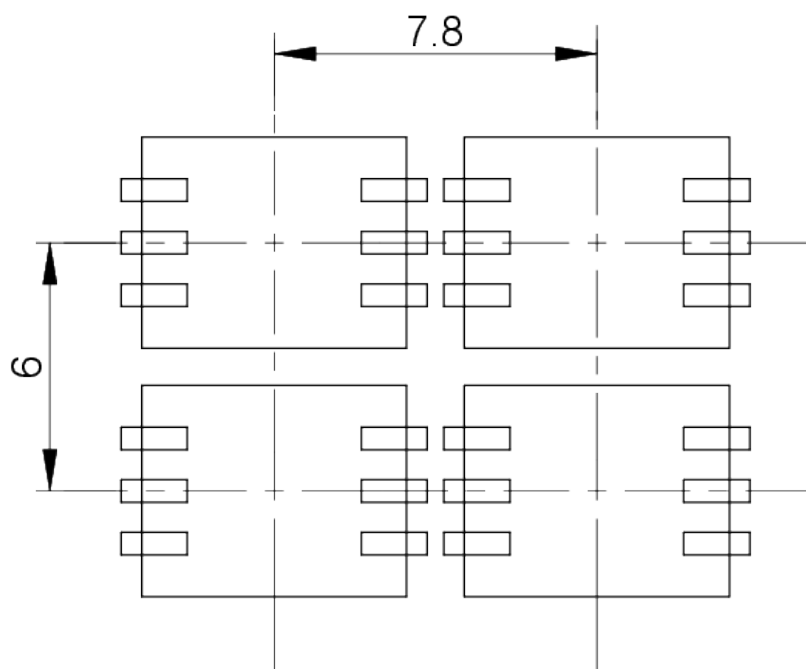


www.texim-europe.com

PCB drawing

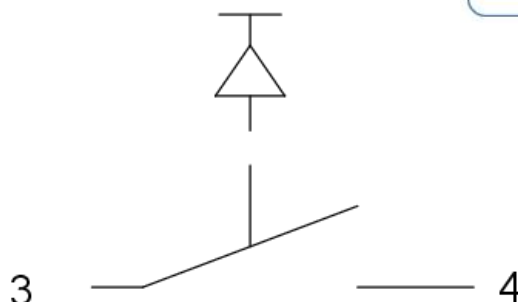
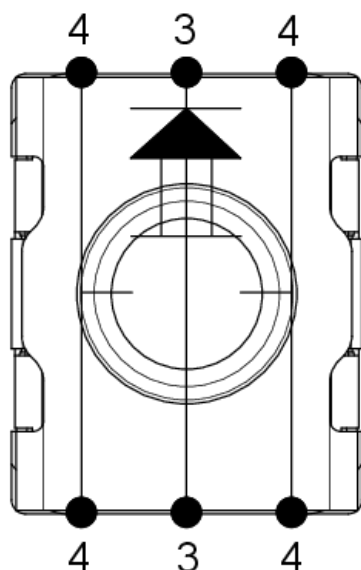


PCB drawing



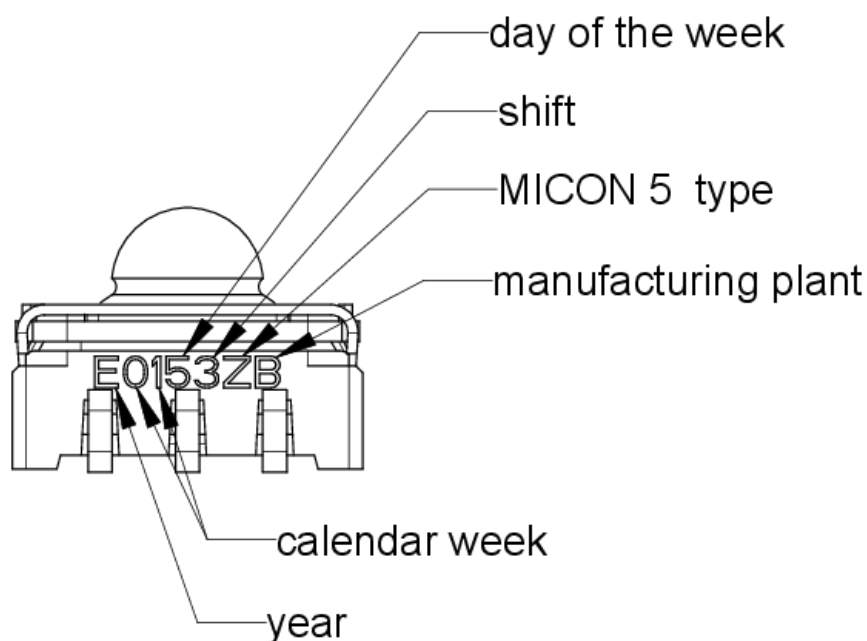
MICON 5 SMT

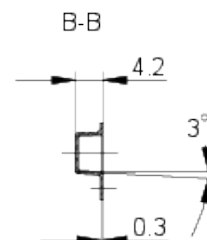
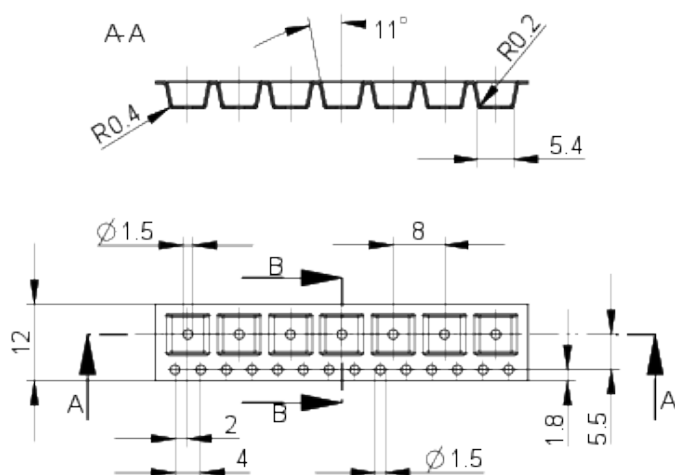
Schematic diagram



Circuit symbol according
to IEC 617

Product labeling drawing



Packaging drawing

Distributed by:



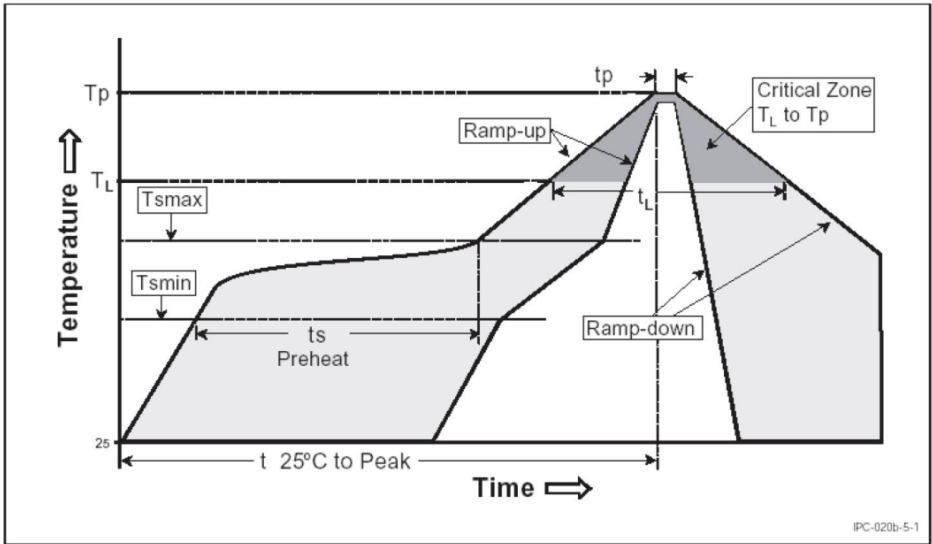
www.texim-europe.com

mounting

RAFI soldering profile for ROHS compliant
reflow components



Publication date: October 7, 2021



Parameter	RAFI values
Gradient (T _L to T _P)	max. 3°C / s
Preheating zone	
Minimum temperature (T _{smin})	150°C
Maximum temperature (T _{smax})	200°C
Time (from min. to max.) (ts)	60 - 120 s
Gradient (T _{smax} to T _L)	max. 3°C / s
Time over melting temperature (T _L) time (t _L)	217°C 60 – 150 s
Peak temperature (T _P)	max. 260°C (+0°C)
Time within peak temperature – 5°C (tp)	20-40 s
Gradient ramp down	max. 6°C / s
Time difference from 25°C to peak temperature	max. 8 minutes

The reflow soldering profile is based on the definition of Jedec J-STD-020D.

The information in this sheet only contains general descriptions and / or performance features, which may not apply precisely as described to the respective application, and which may change due to further product enhancements. The technical data, illustrations and other information about our products are the mere results of individual technical testing. These descriptions and other product features are only binding if they expressly agreed upon at the time of the conclusion of a binding contract. In all other cases, we reserve the right to make technical changes as well as changes of availability. Pictures and other graphic illustrations are approximations only. All product names may be trademarks or brand names of the RAFI Group or any other sub-supplier of RAFI. The use of such by any third parties for their own purposes may infringe the rights of the respective entity holding those rights. Subject to change and errors excepted. Details about delivery times and availability are noncommittal and have no legal force.

RAFI GmbH & Co. KG
Ravensburger Str. 128-134, 88276 Berg / Ravensburg
GERMANY – www.rafi-group.com

page 1 of 1

Distributed by:





Headquarters & Warehouse

Elektrostraat 17
NL-7483 PG Haaksbergen
The Netherlands

T: +31 (0)53 573 33 33
E: info@texim-europe.com
Homepage: www.texim-europe.com



The Netherlands

Elektrostraat 17
NL-7483 PG Haaksbergen

T: +31 (0)53 573 33 33
E: nl@texim-europe.com



Belgium

Zuiderlaan 14, box 10
B-1731 Zellik

T: +32 (0)2 462 01 00
E: belgium@texim-europe.com



UK & Ireland

St Mary's House, Church Lane
Carlton Le Moorland
Lincoln LN5 9HS

T: +44 (0)1522 789 555
E: uk@texim-europe.com



Germany - North

Bahnhofstrasse 92
D-25451 Quickborn

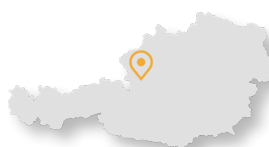
T: +49 (0)4106 627 07-0
E: germany@texim-europe.com



Germany - South

Martin-Kollar-Strasse 9
D-81829 München

T: +49 (0)89 436 086-0
E: muenchen@texim-europe.com



Austria

Warwitzstrasse 9
A-5020 Salzburg

T: +43 (0)662 216 026
E: austria@texim-europe.com



Nordic

Søndre Jagtvej 12
DK-2970 Hørsholm

T: +45 88 20 26 30
E: nordic@texim-europe.com



Italy

Via Matteotti 43
IT-20864 Agrate Brianza (MB)

T: +39 (0)39 9713293
E: italy@texim-europe.com